

Model

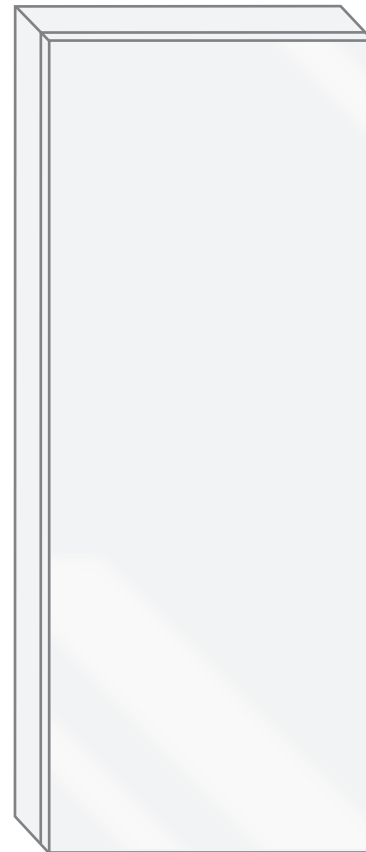
- Plaza 1230
- Included model in this configuration:
 - Plaza 1530
 - Plaza 1830
 - Plaza 2030
 - Plaza 2430

Construction

- Quality polished edge mirror
- 5 MM Silver Backed Copper Free
- Installation Either Surface Mount (Side Mirror Trim Panels included) or Recessed
- Includes installation hardware

Codes/Standards Applicable

- Conforms to UL Std. 962
- Cert. to CSA Std. C22.2 No.250.0-08
- ETL Intertek 5004931

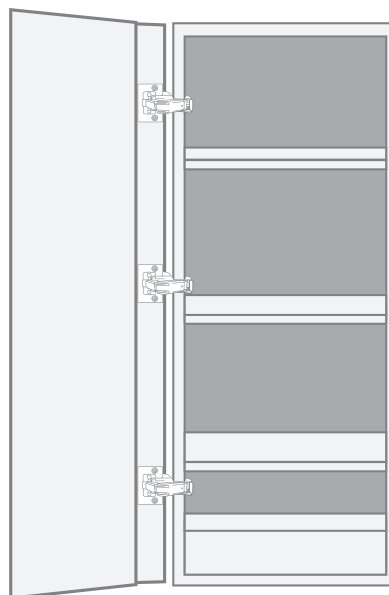
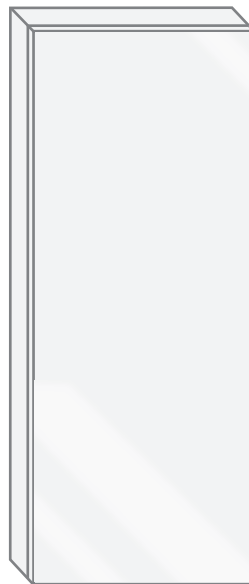


SKU

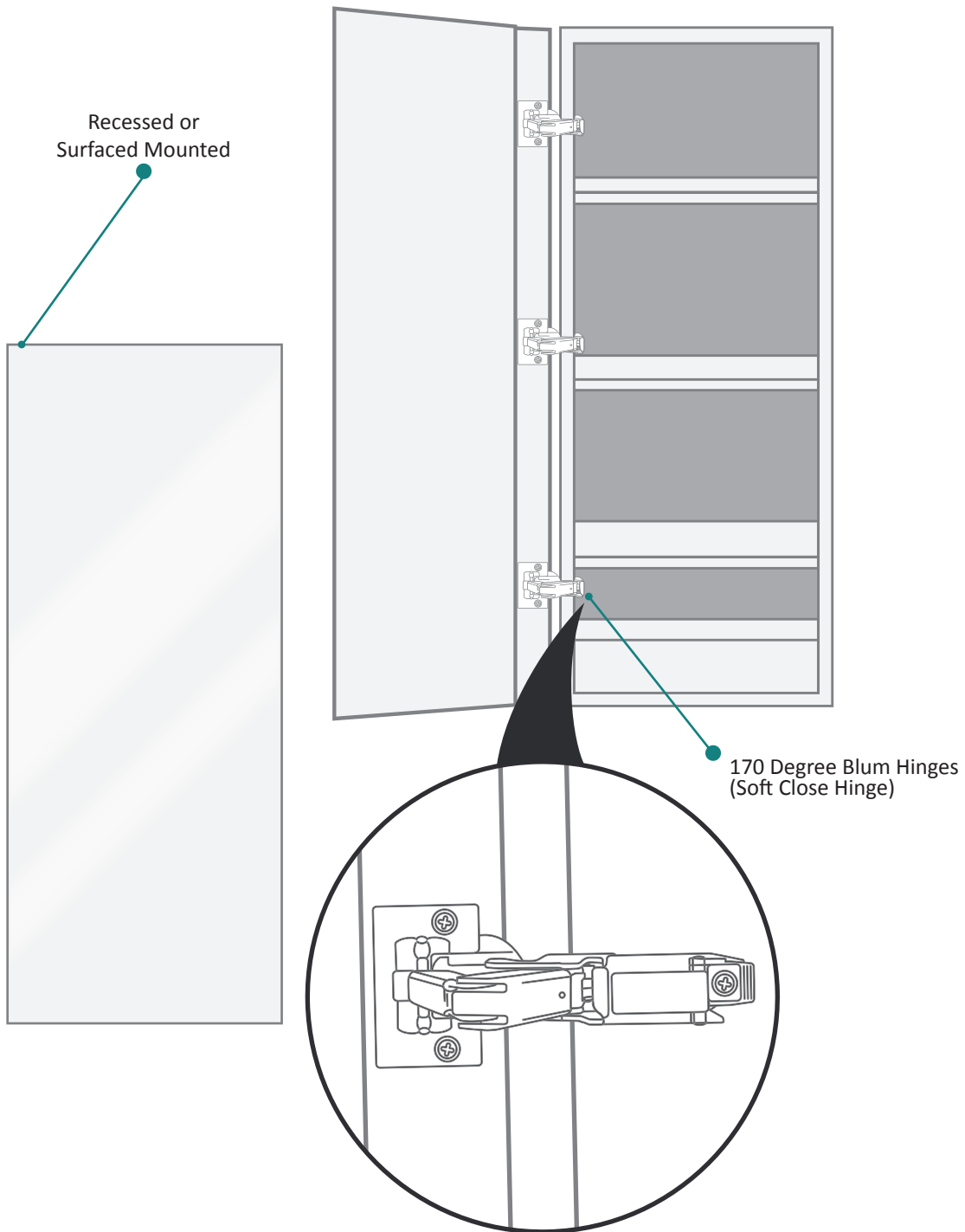
- Name: Plaza 1230
- Height: 30"
- Width: 12"
- Weight: 30lbs
- Shipping weight: 35lbs

CABINET CONFIGURATION

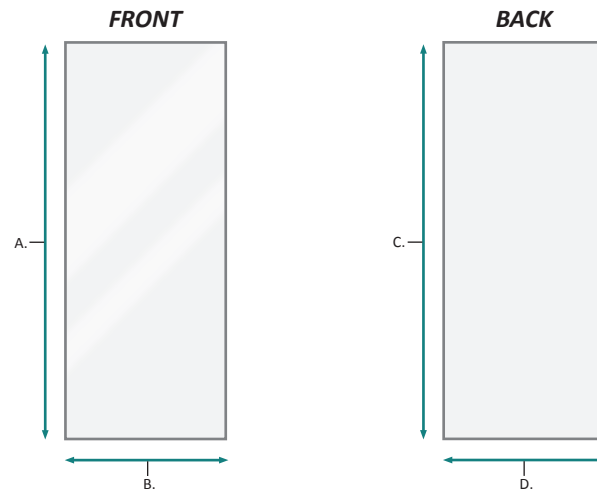
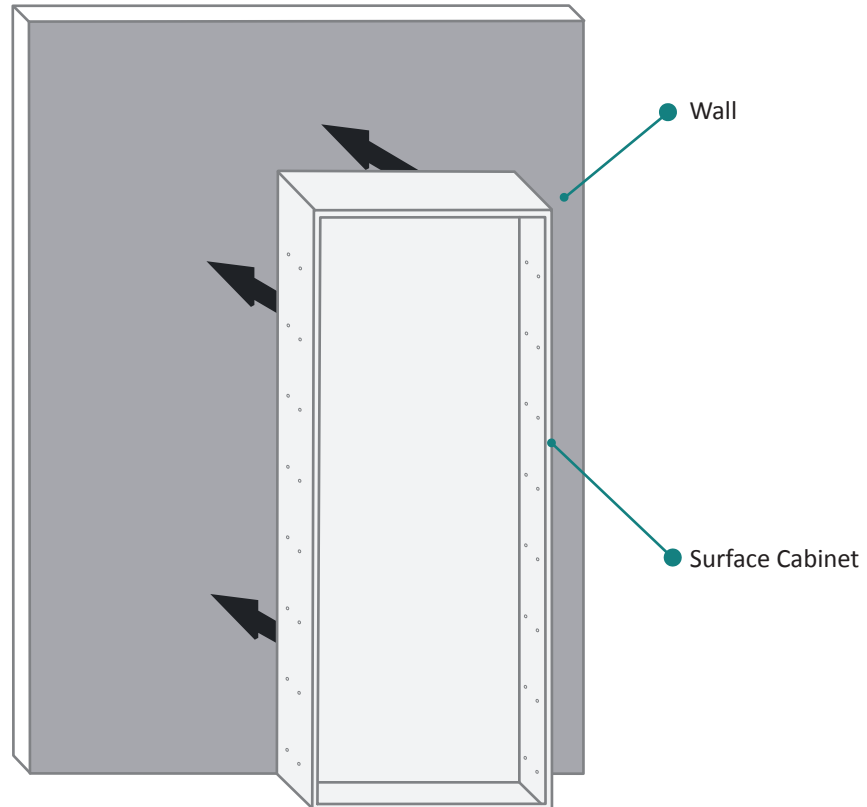
- Included model in this configuration:
Plaza 1530 Plaza 1830
Plaza 2030 Plaza 2430



Plaza 1230 Medicine Cabinet - Specification Sheet



SURFACE MOUNT

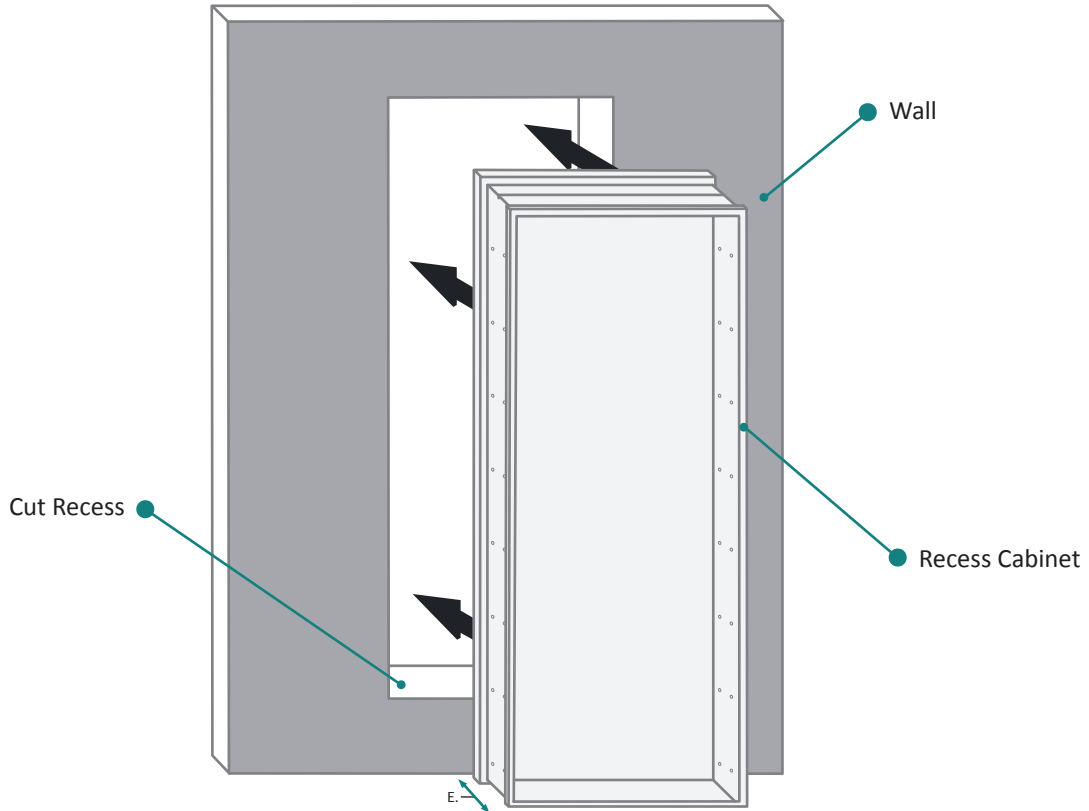


FRONT & BACK

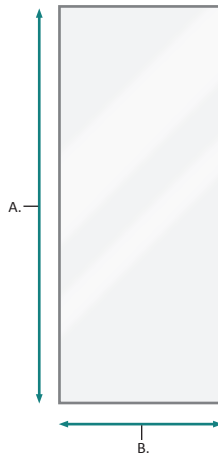
MODEL	A	B	C	D
PLAZA1230	30	12	30	12

These measurements are for reference, for best results we suggest you measure actual product as small variations in size are possible

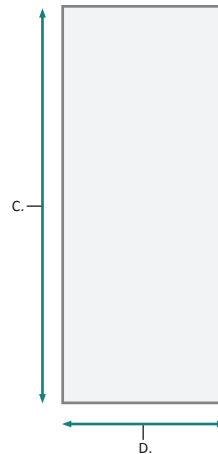
RECESS MOUNT



FRONT



BACK

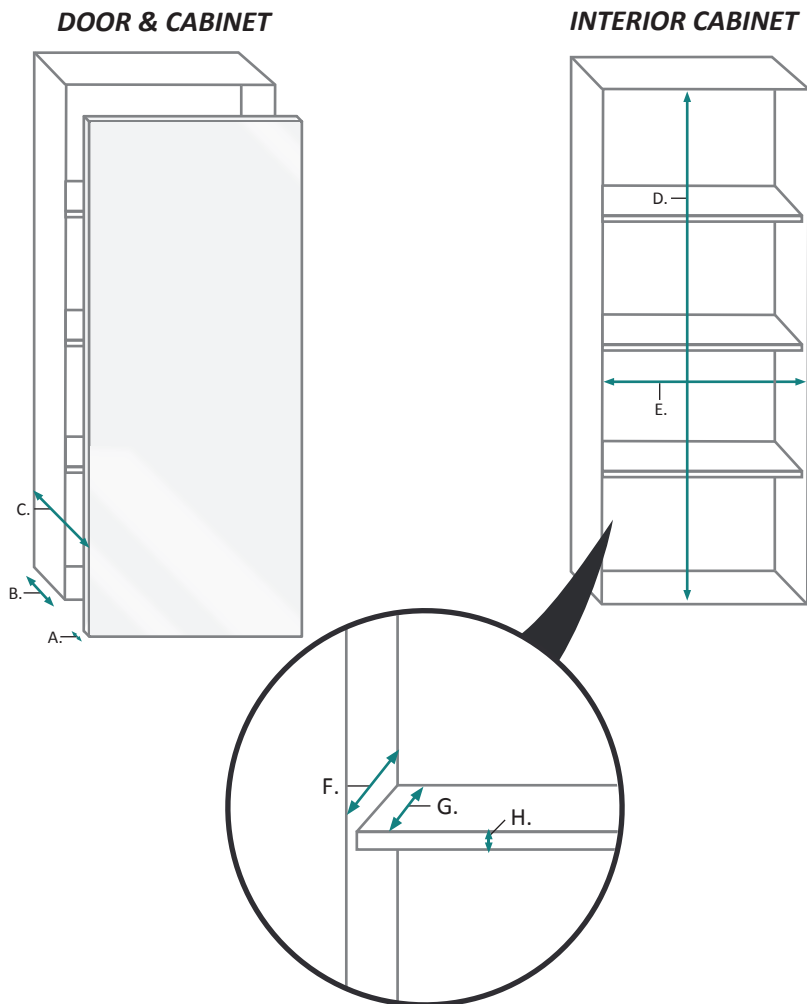


FRONT & BACK

MODEL	A	B	C	D	E
PLAZA1230	30	12	29-1/8	11-1/8	3-1/2

These measurements are for reference, for best results we suggest you measure actual product as small variations in size are possible

Plaza 1230 Medicine Cabinet - Specification Sheet



DOOR, CABINET & INTERIOR CABINET

MODEL	A	B	C	D	E	F	G	H
PLAZA1230	7/8	3-1/2	5	29-5/8	10-1/4	3-5/8	2-3/8	3/8

These measurements are for reference, for best results we suggest you measure actual product as small variations in size are possible